

**SONY**

Hi-Fi Products  
Service Bulletin

Sony Service Company - Technical Services  
A Division of Sony Corporation of America  
Sony Drive, Park Ridge, New Jersey 07656

**Model:** TA-AV490, RM-P202

**No. 157**

**Subject:** Incorrect Mode Using  
Remote Commander

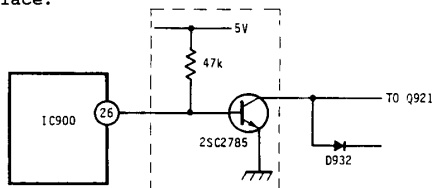
**Date:** December 26, 1990

**Symptom:**  
(125)

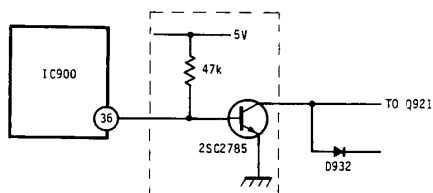
When using the remote commander and Reverse Play is activated, the amplifier enters the Hall mode.

**Solution:** If this symptom occurs, please perform the following procedure:

- A. 1. Replace IC900.  
2. On the Micro Board, remove JW152 and mount it at the JW153 position.  
3. Remove JW38 and mount the circuit shown in its place.



- B. Remove JW36 and mount the circuit shown in its place.



Ref. No.	Description	Part Number
IC900	M507220-401SP	8-759-630-57
Modification	2SC2785	8-729-119-78
Modification	47k Ohm Resistor	1-249-437-11

Reference:

PRINTED IN U.S.A.  
CSA-131290-6

CSA-13 Amplifier